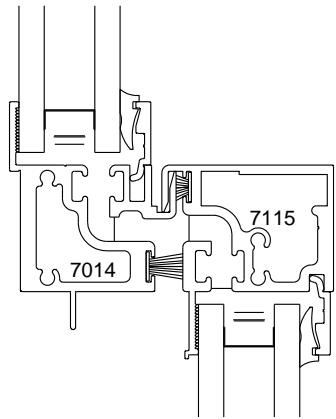
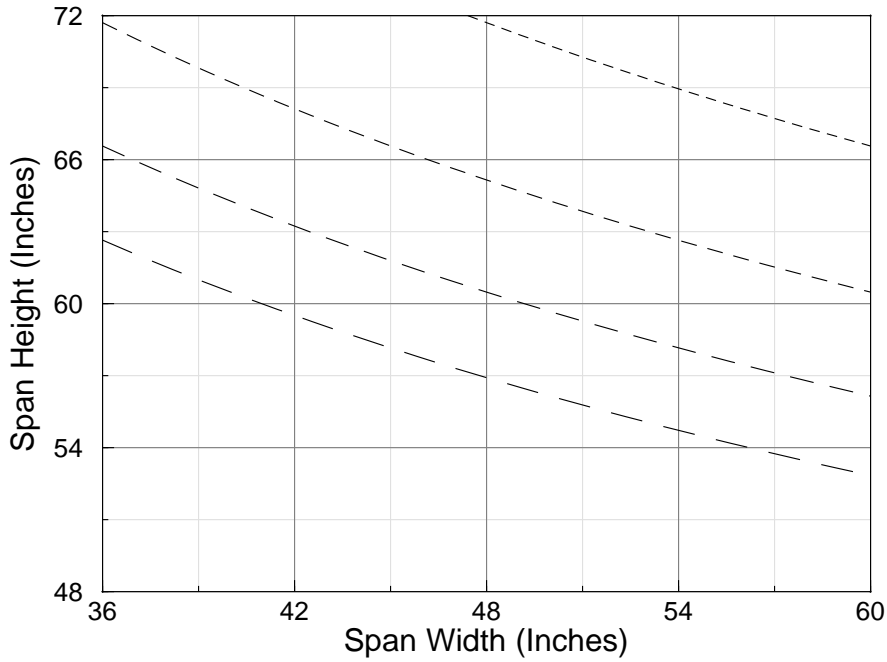
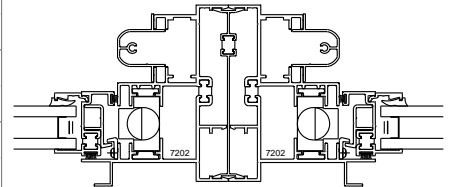
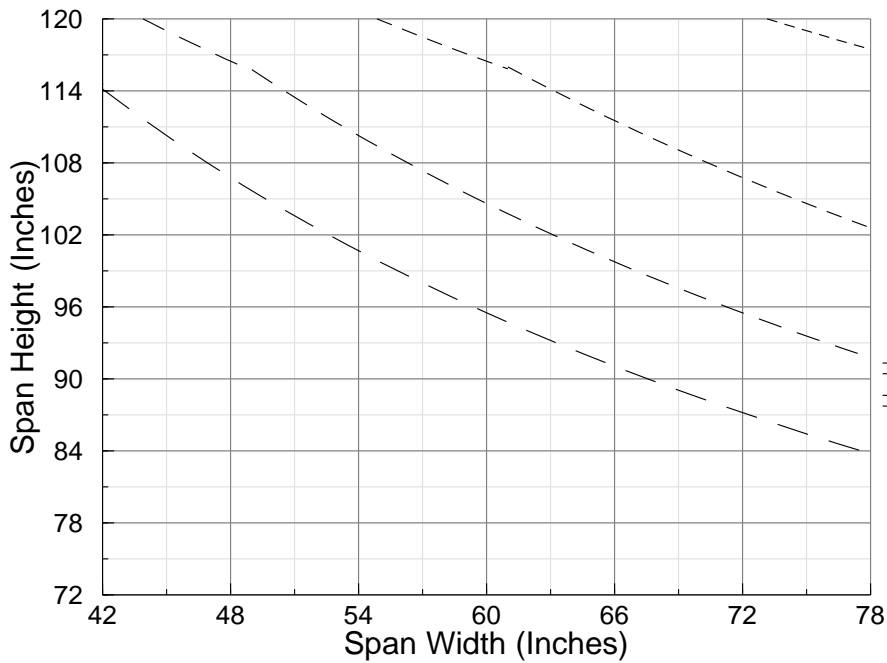


### Windload Chart for 7014/7115 Meeting Rail



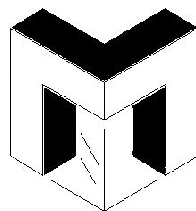
- 15 PSF
- 20 PSF
- 25 PSF
- 30 PSF

### Windload Chart for #7202/7190/7202 I Beam Mullion



- 15 PSF
- 20 PSF
- 25 PSF
- 30 PSF

All Calculations Based on L/175 Deflection



**MANKO**  
WINDOW SYSTEMS, INC.

PHONE 785/776-9643 800/642-1488 FAX 785/776-9644  
800 HAYES DRIVE MANHATTAN, KS 66502