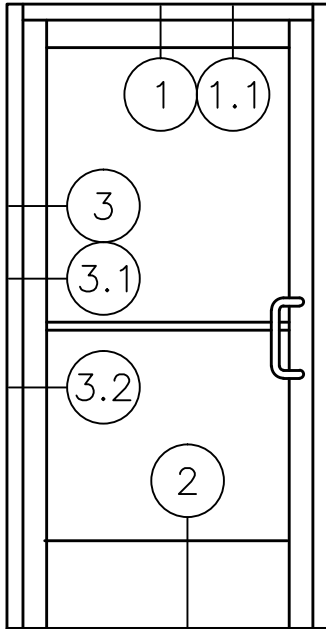


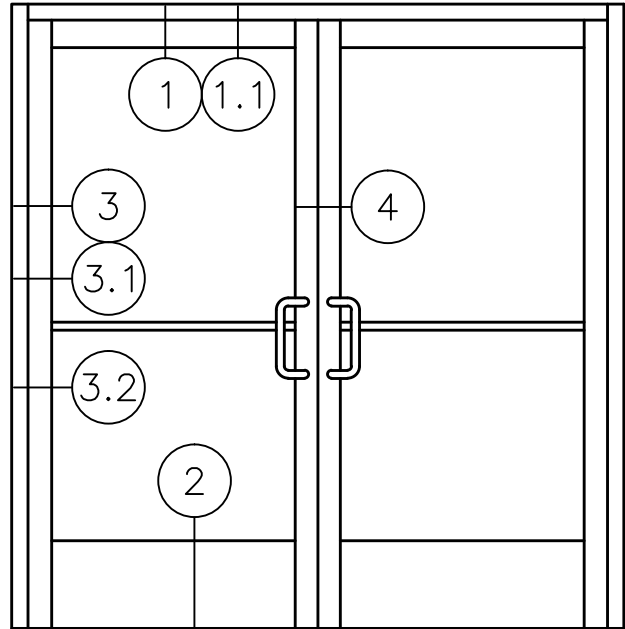


1450

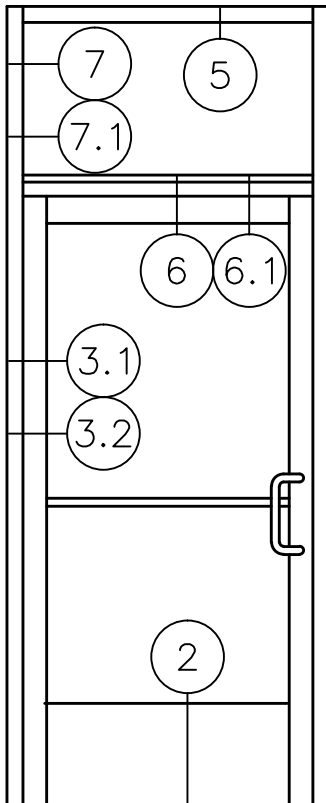
2" X 4 1/2" STOREFRONT DOOR FRAMING  
WITH 100 SERIES (NARROW STILE)  
DOOR DETAILS - CENTER PIVOT &  
CONCEALED OVERHEAD CLOSER



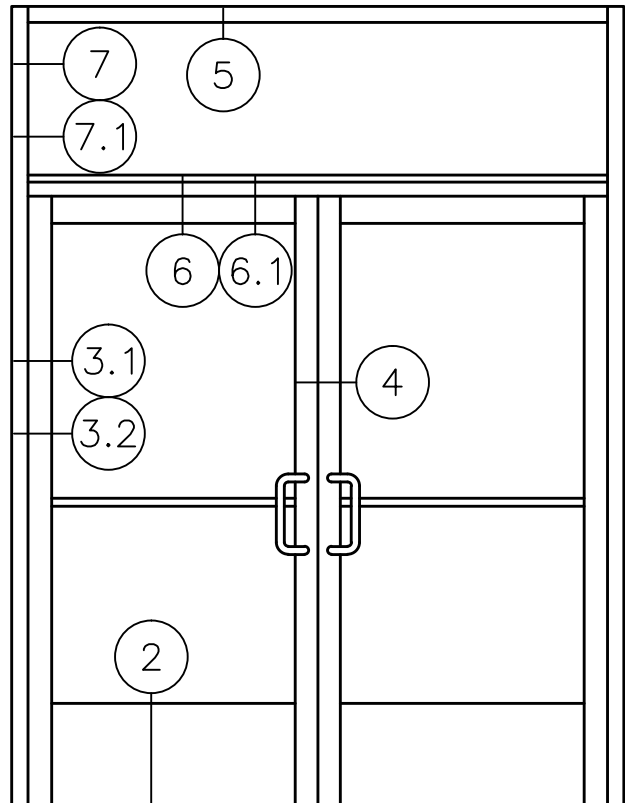
SINGLE DOOR  
WITHOUT TRANSOM  
STANDARD CONFIGURATION



PAIR DOORS  
WITHOUT TRANSOM  
STANDARD CONFIGURATION



SINGLE DOOR  
WITH TRANSOM  
STANDARD CONFIGURATION



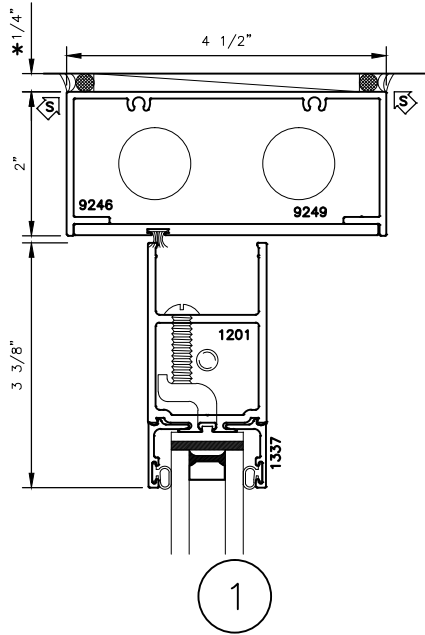
PAIR DOORS  
WITH TRANSOM  
STANDARD CONFIGURATION



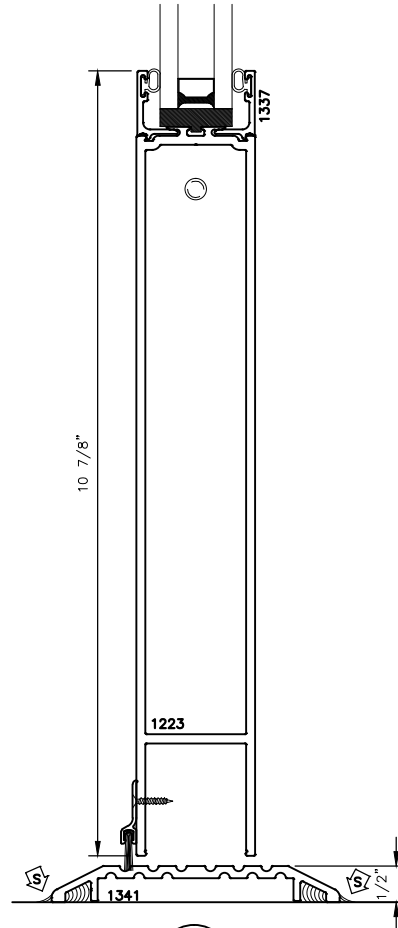
1450

2" X 4 1/2" STOREFRONT DOOR FRAMING  
 WITH 100 SERIES (NARROW STILE)  
 DOOR DETAILS - CENTER PIVOT &  
 CONCEALED OVERHEAD CLOSER

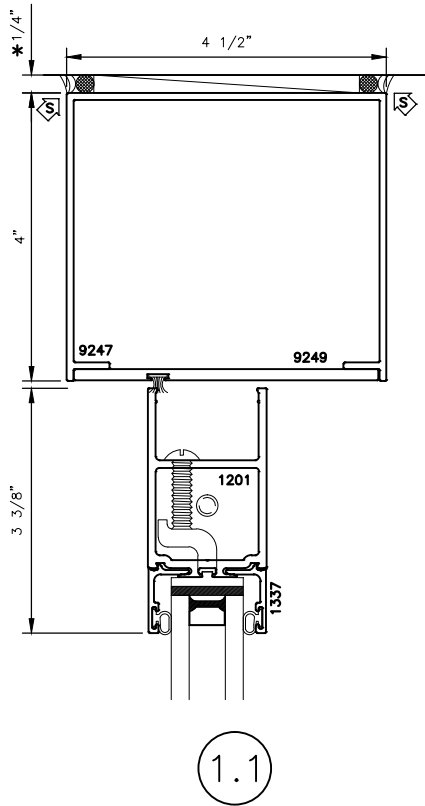
\* MINIMUM RECOMMENDED FOR THERMAL ISOLATION.  
 INCREASE AS REQUIRED TO COMPLY WITH SEALANT  
 MANUFACTURERS' INSTRUCTIONS



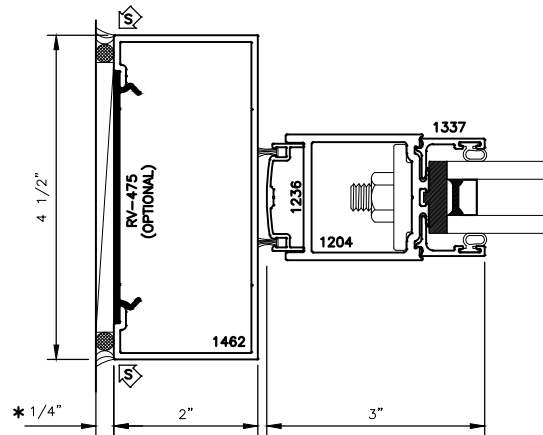
1



2



1.1



3

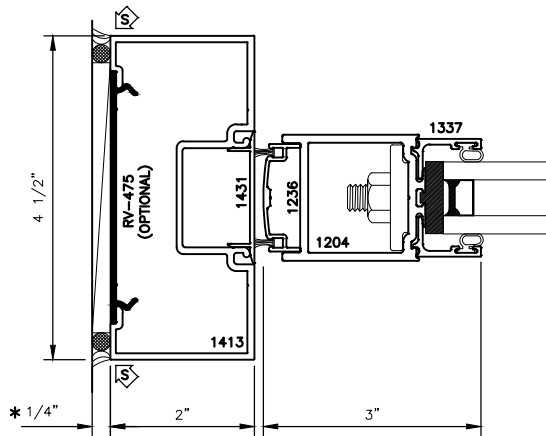
STANDARD SWEEP AND THRESHOLD SHOWN



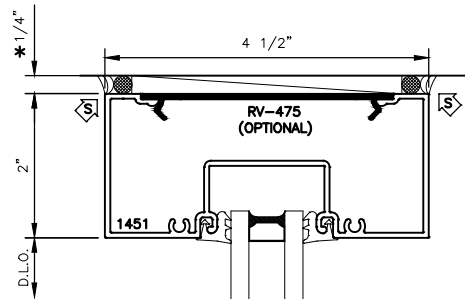
1450

2" X 4 1/2" STOREFRONT DOOR FRAMING  
WITH 100 SERIES (NARROW STILE)  
DOOR DETAILS - CENTER PIVOT &  
CONCEALED OVERHEAD CLOSER

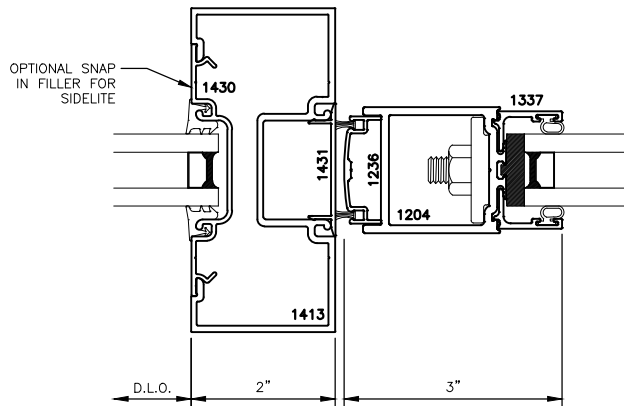
\* MINIMUM RECOMMENDED FOR THERMAL ISOLATION.  
INCREASE AS REQUIRED TO COMPLY WITH SEALANT  
MANUFACTURERS' INSTRUCTIONS



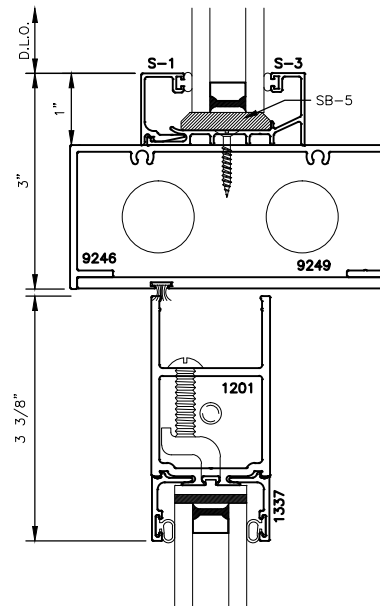
OPT.  
3.1



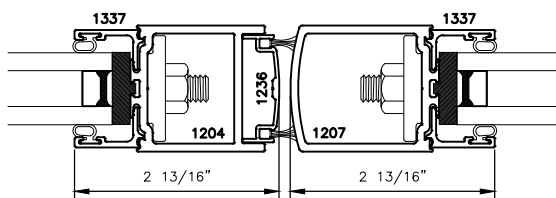
5



OPT.  
3.2



6



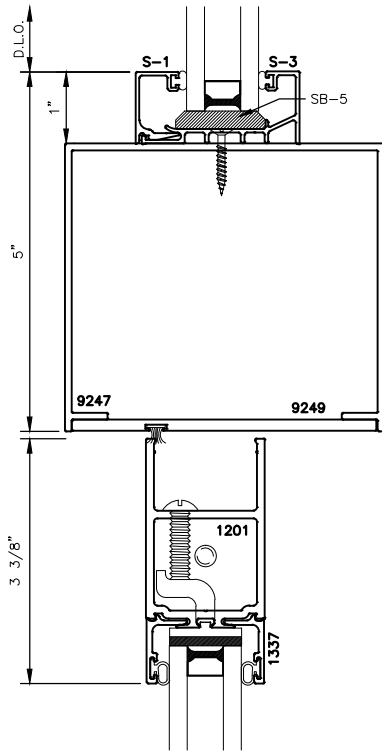
4



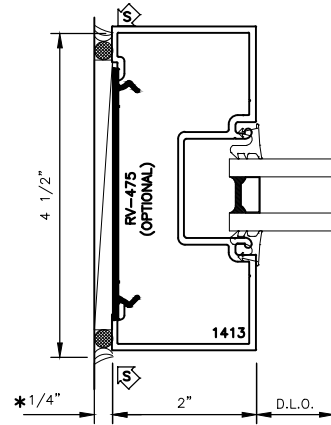
1450

# 2" X 4 1/2" STOREFRONT DOOR FRAMING WITH 100 SERIES (NARROW STILE) DOOR DETAILS - CENTER PIVOT & CONCEALED OVERHEAD CLOSER

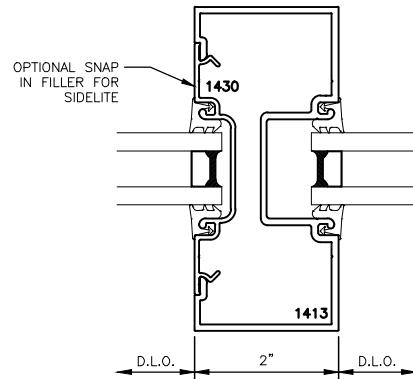
\* MINIMUM RECOMMENDED FOR THERMAL ISOLATION.  
INCREASE AS REQUIRED TO COMPLY WITH SEALANT  
MANUFACTURERS' INSTRUCTIONS



OPT.  
6.1



7



OPT.  
7.1